

LEAF ANATOMY ASSIGNMENT

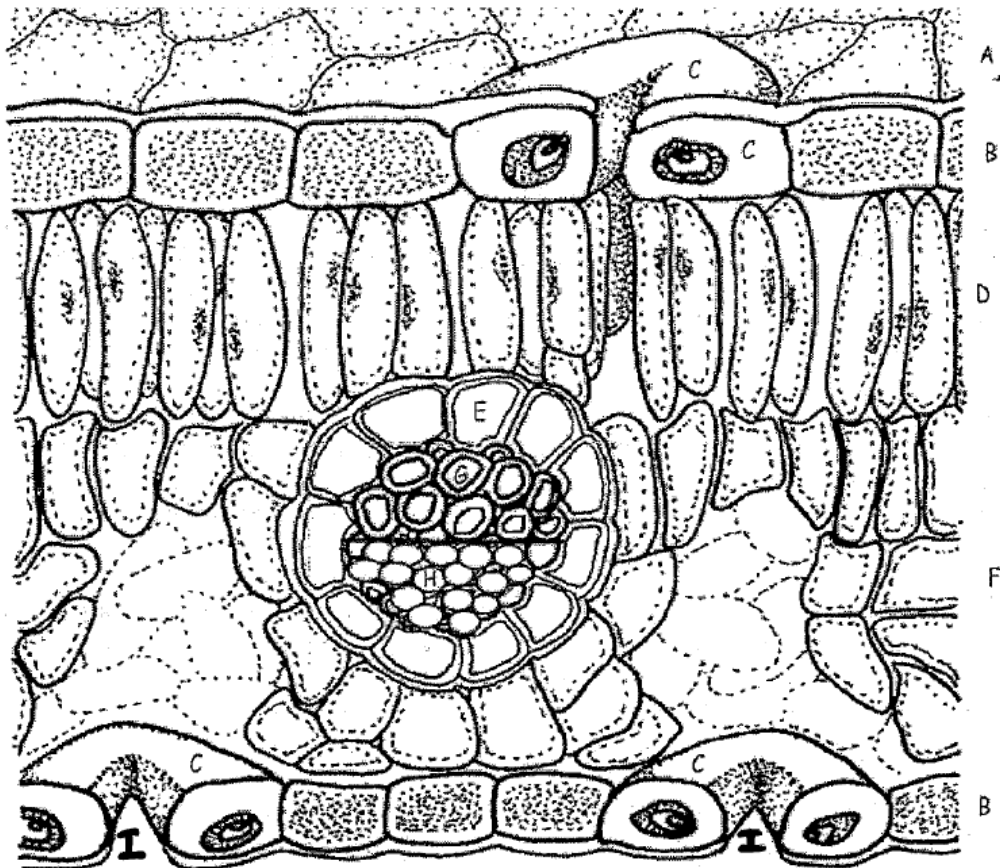
Name _____

Use the instruction paper to answer the questions and color the leaf.

Questions:

1. What two tissues are found within a vein?
2. What does the word "mesophyll" mean?
3. What two layers of the plant contain chloroplasts?
4. The outermost layer of cells: _____
5. The waxy covering of the leaf.: _____
6. These cells function to open and close stomata. _____
7. Outer layer of the vein: _____
8. Column like cells that lie just under the epidermis. _____
9. Openings that allow for gas exchange. _____
10. The stalk that connects the leaf to the stem. _____

- A Cuticle (light blue)
- B Epidermis (yellow)
- C Guard cells (pink)
- D Palisade Mesophyll (dark green)
- G Phloem (purple)
- H Xylem (orange)
- F Spongy Mesophyll (light green)
- E Bundle Sheath (dark blue)
- I Stomata (brown)



9/4/95